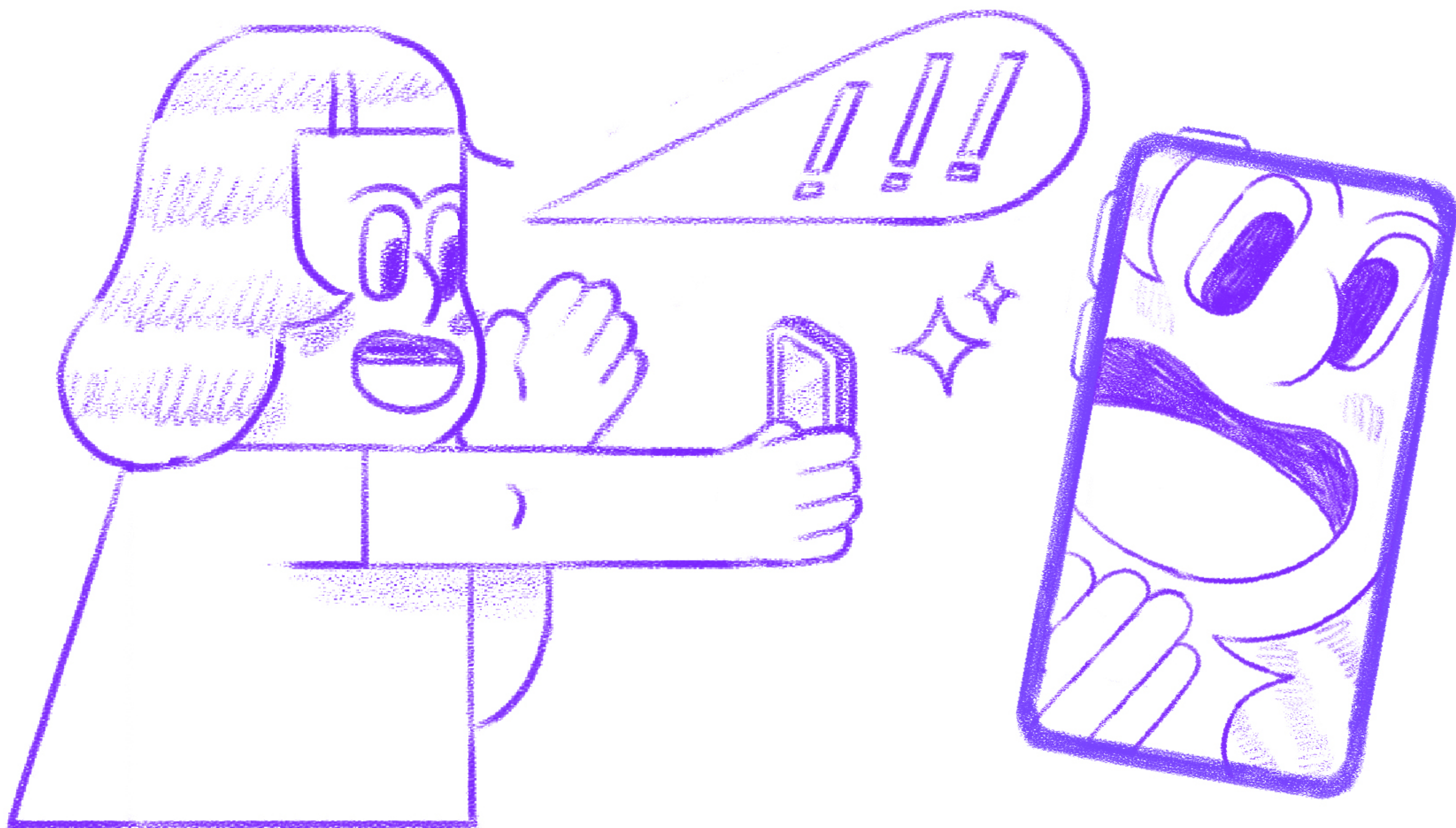
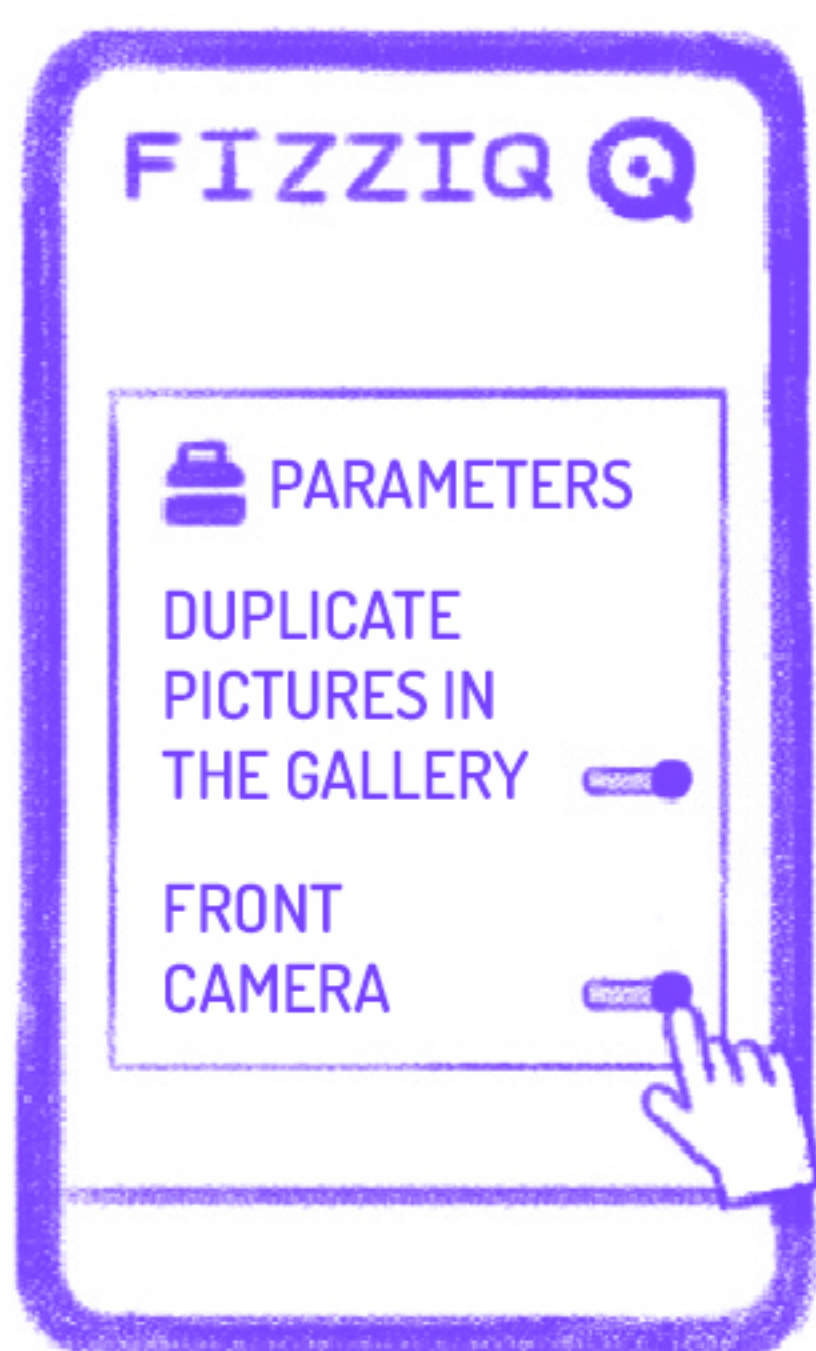


THE SCREAMING SELFIE

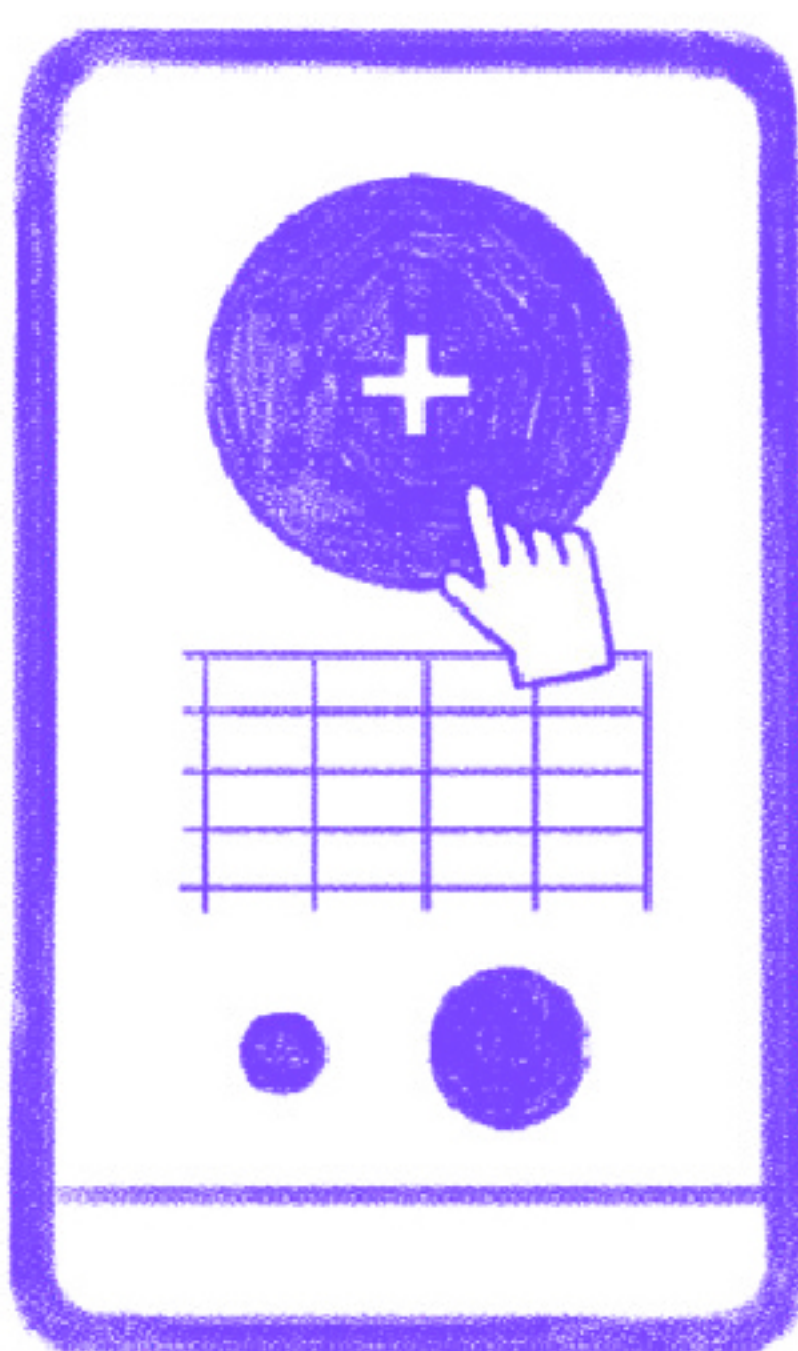
HAVE YOU EVER TAKEN A SELFIE SCREAMING? THAT IS HOW!



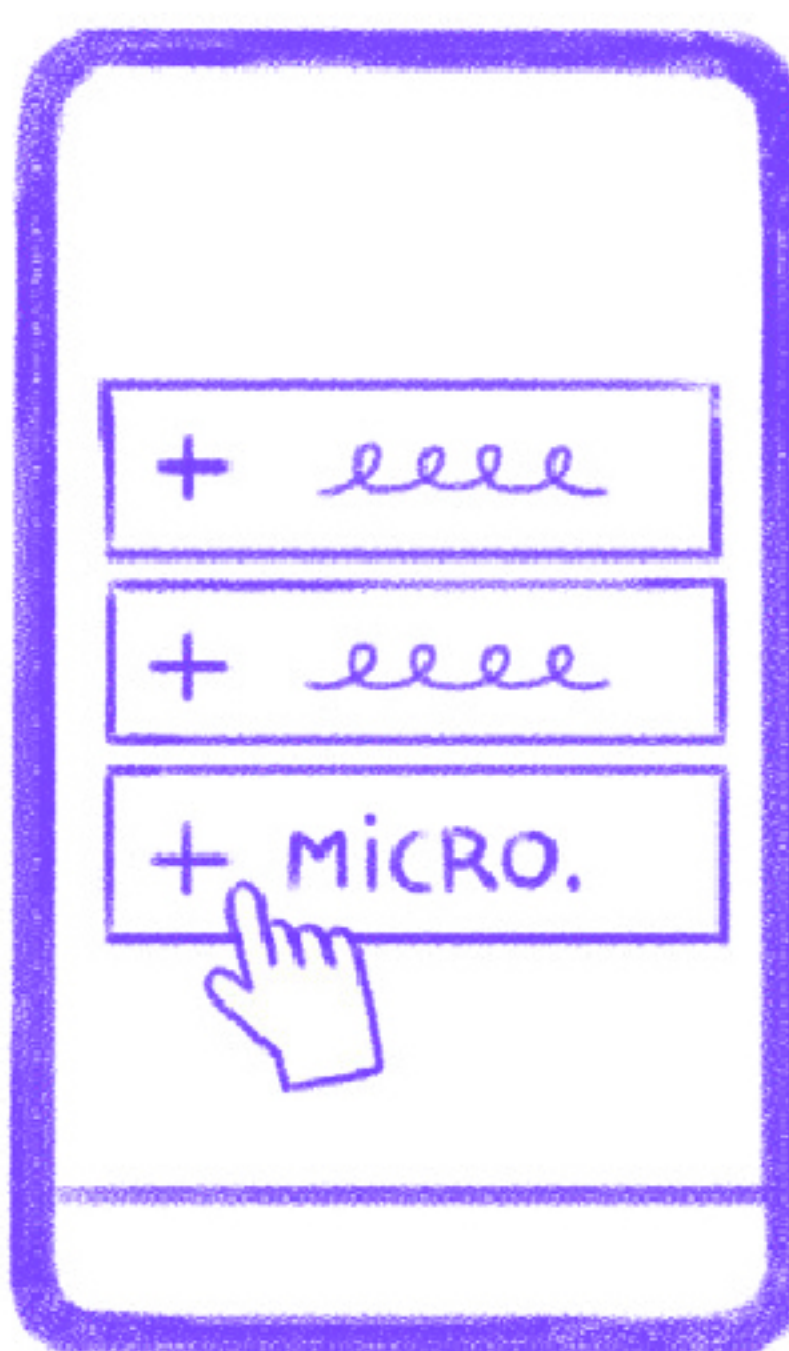
1



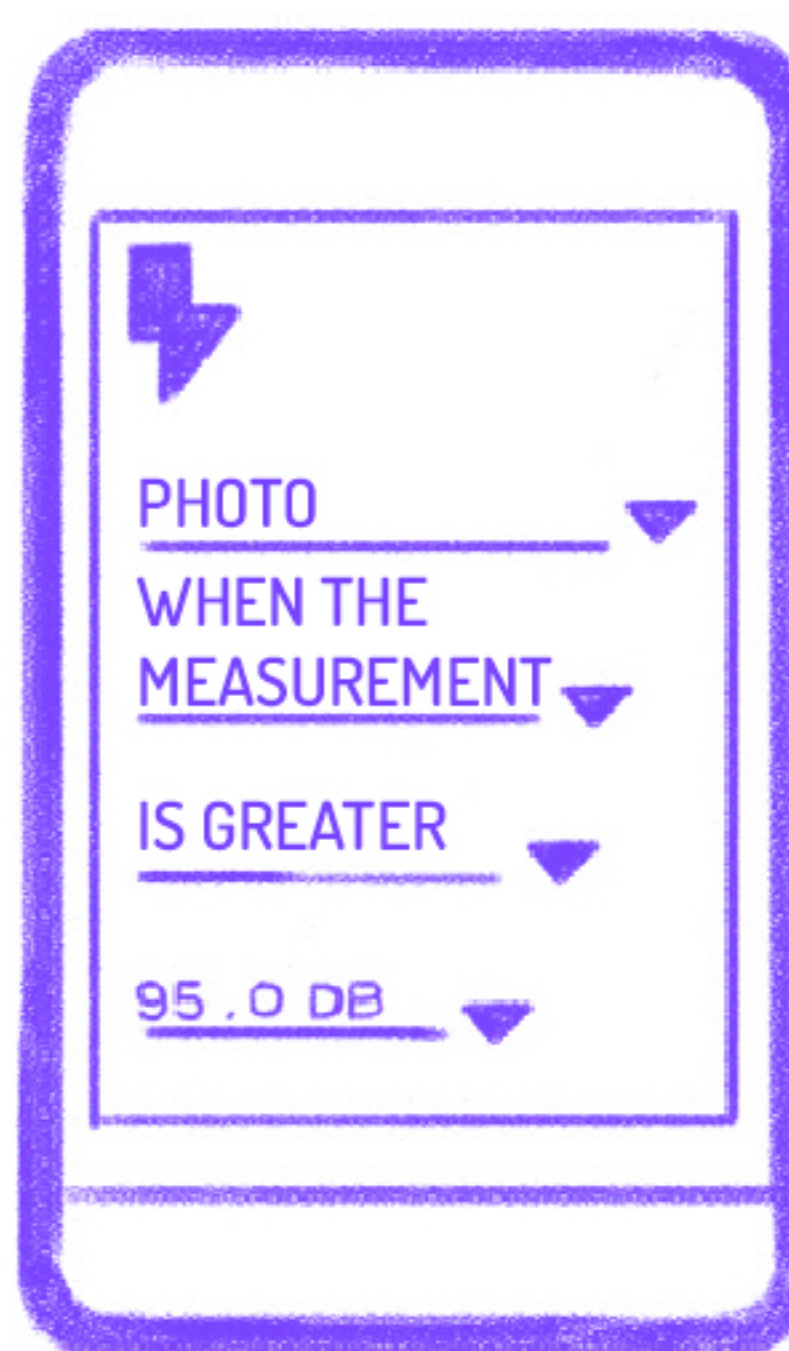
2



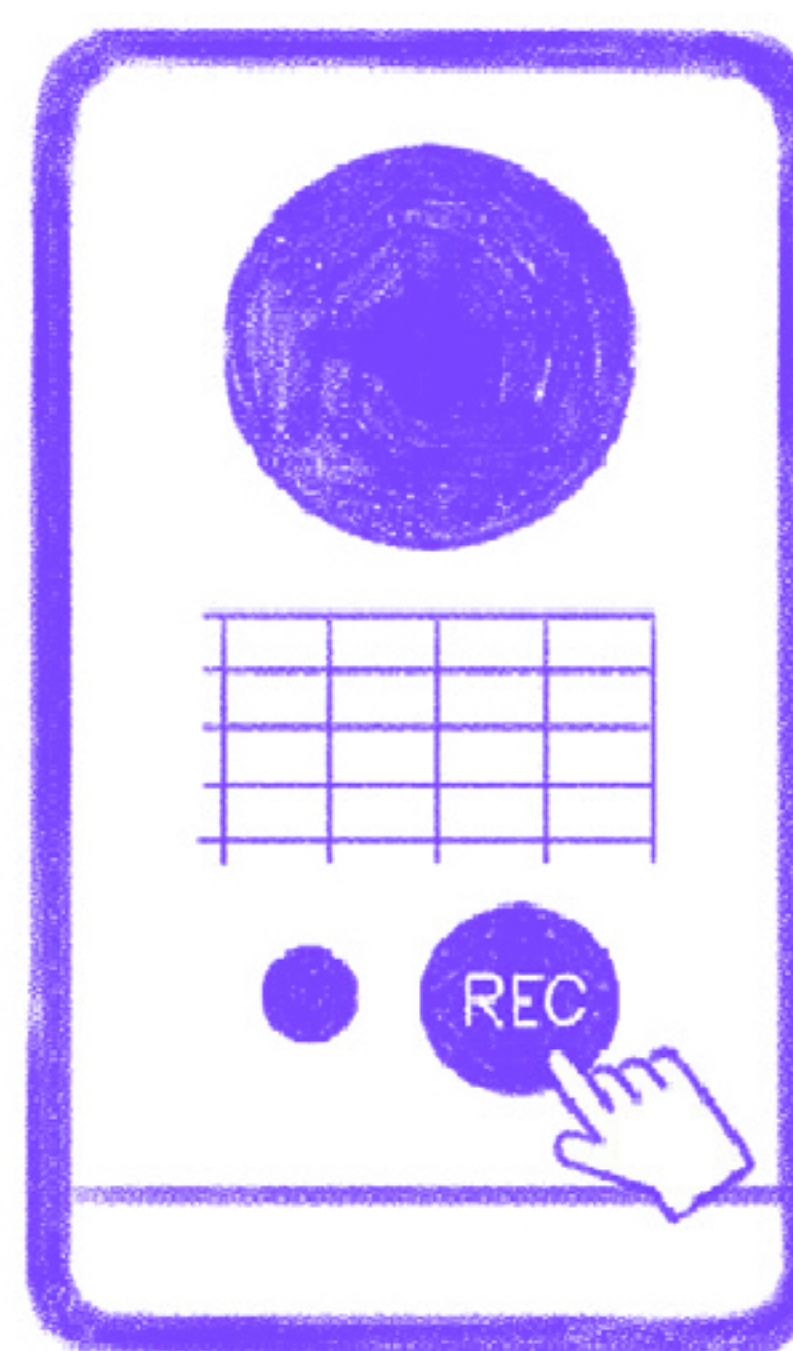
3



4



5



In **Settings** then **Parameters**, activate these options as hereabove.

In **Instruments** click on the big circle.

Select **Microphone** et choose **Sound Intensity**.

In **Tools** then in **Triggers**, enter the above values.

Go back to **Instruments** and press **REC**.

YOUR TURN NOW TO SHOUT TO TRIGGER THE SELFIE!

FIND BACK YOUR SELFIE IN YOUR PHOTO ALBUM.

THE KANGAROO SELFIE

HAVE YOU EVER TAKEN A SELFIE WHILE JUMPING? THAT IS HOW!



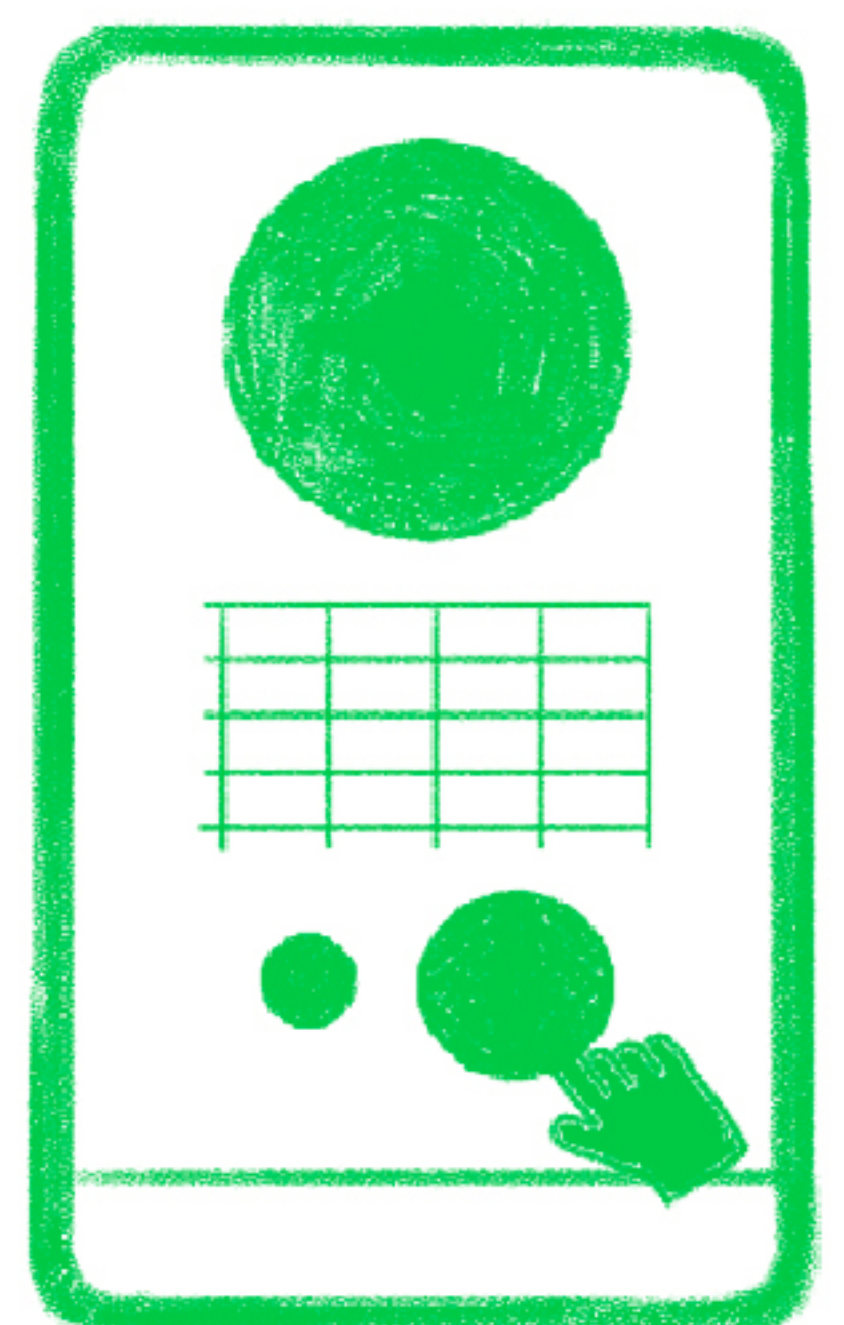
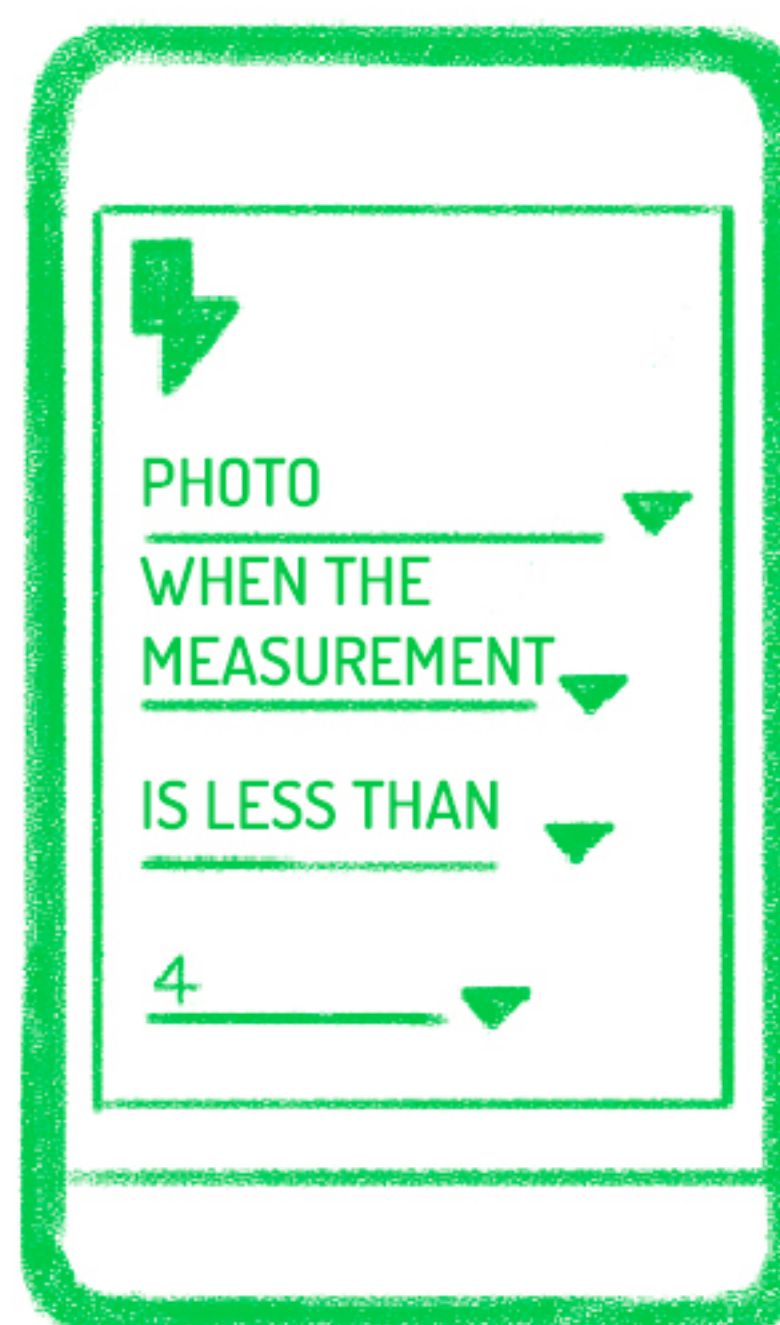
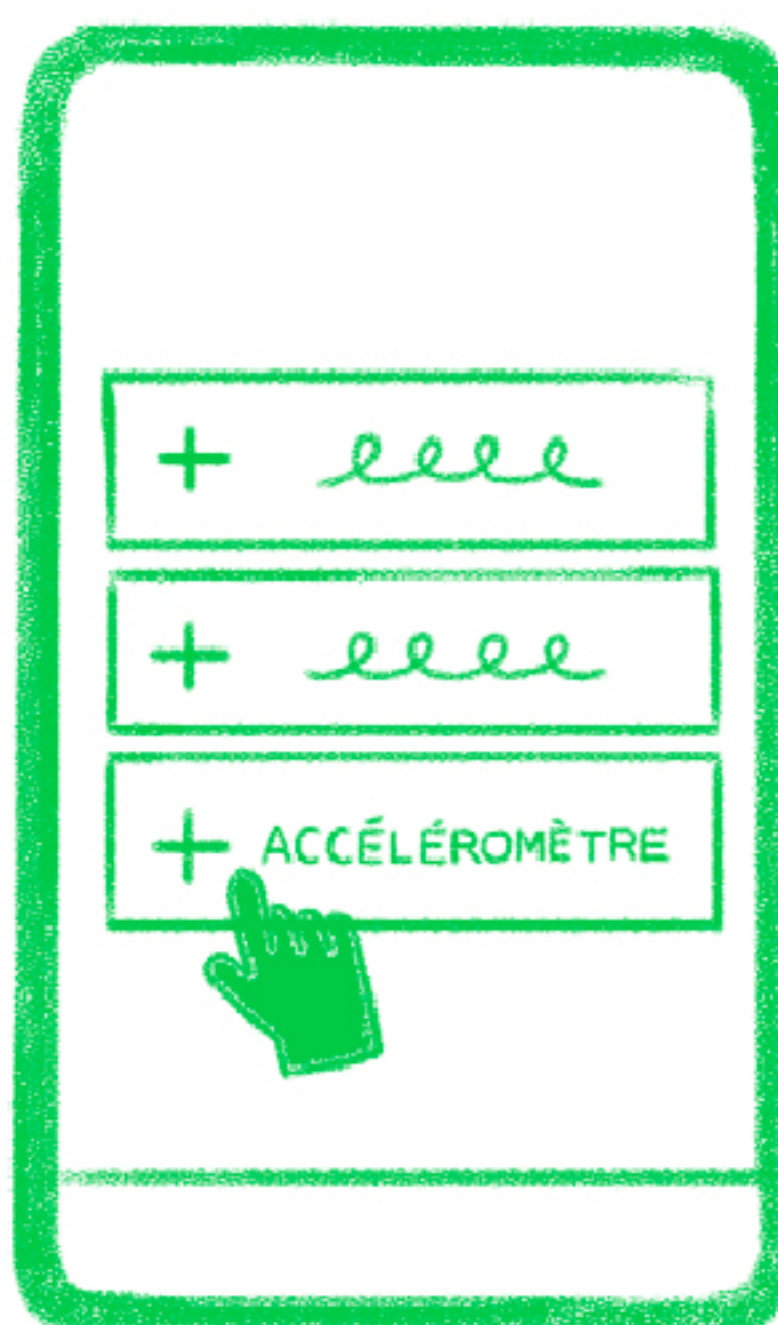
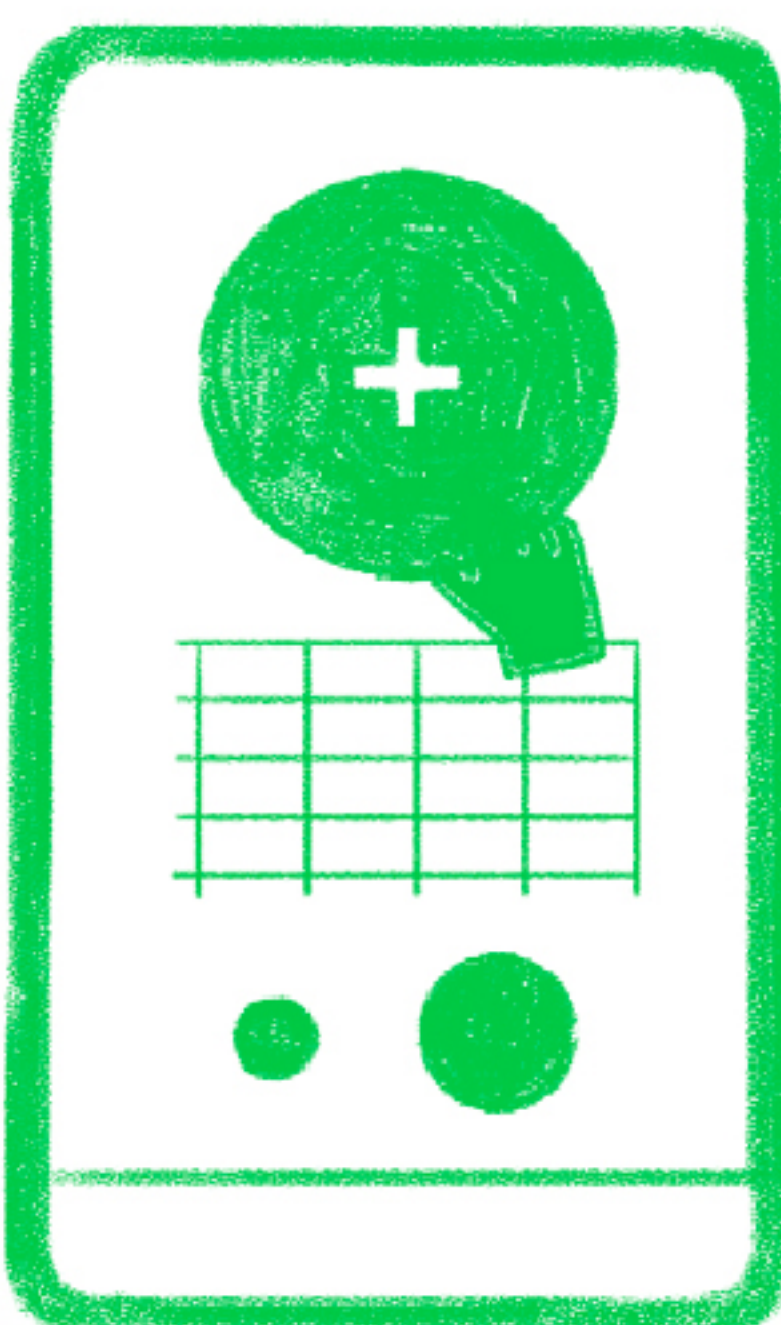
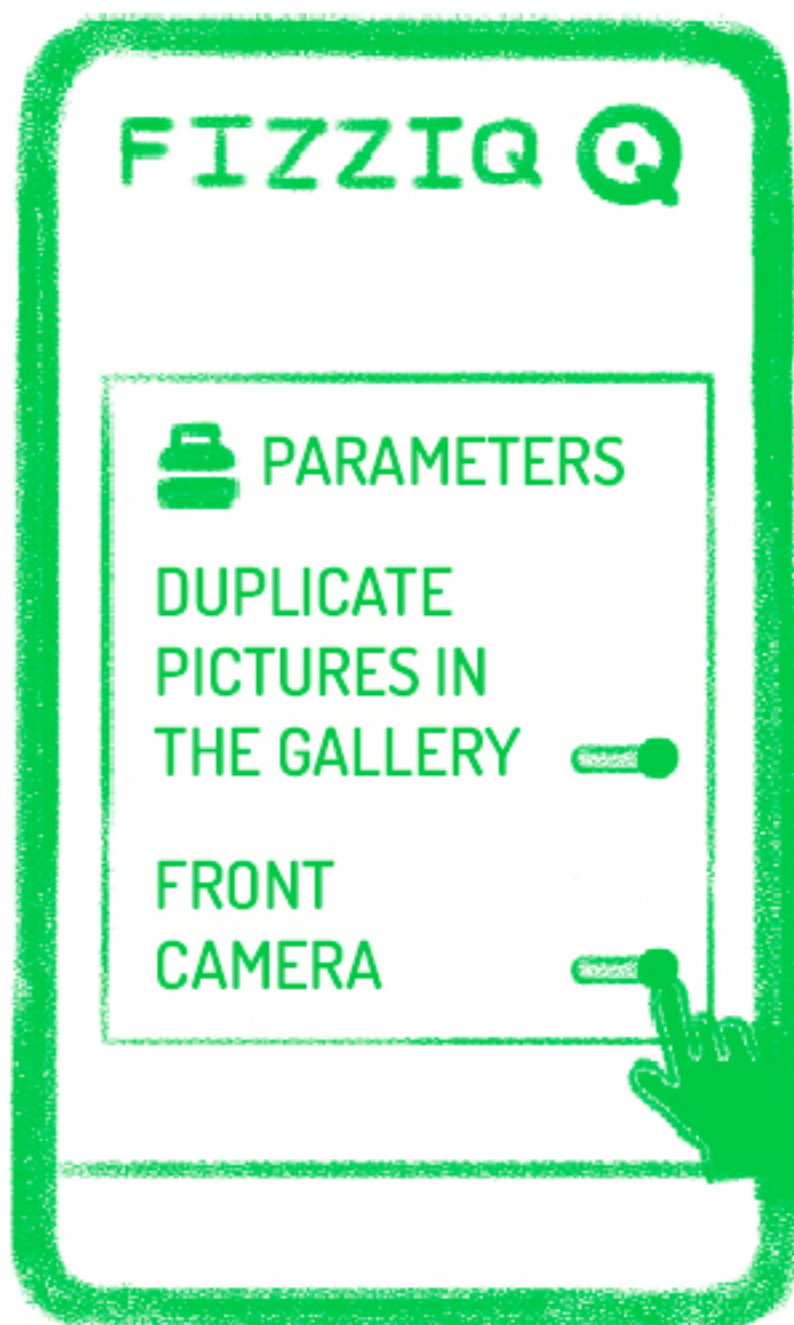
1

2

3

4

5



In **Settings** then **Parameters**, activate these options as hereabove.

In **Instruments** click on the big circle.

Select **Accelerometer** et choose **Acceleration**.

In **Tools** then in **Triggers**, enter the above values.

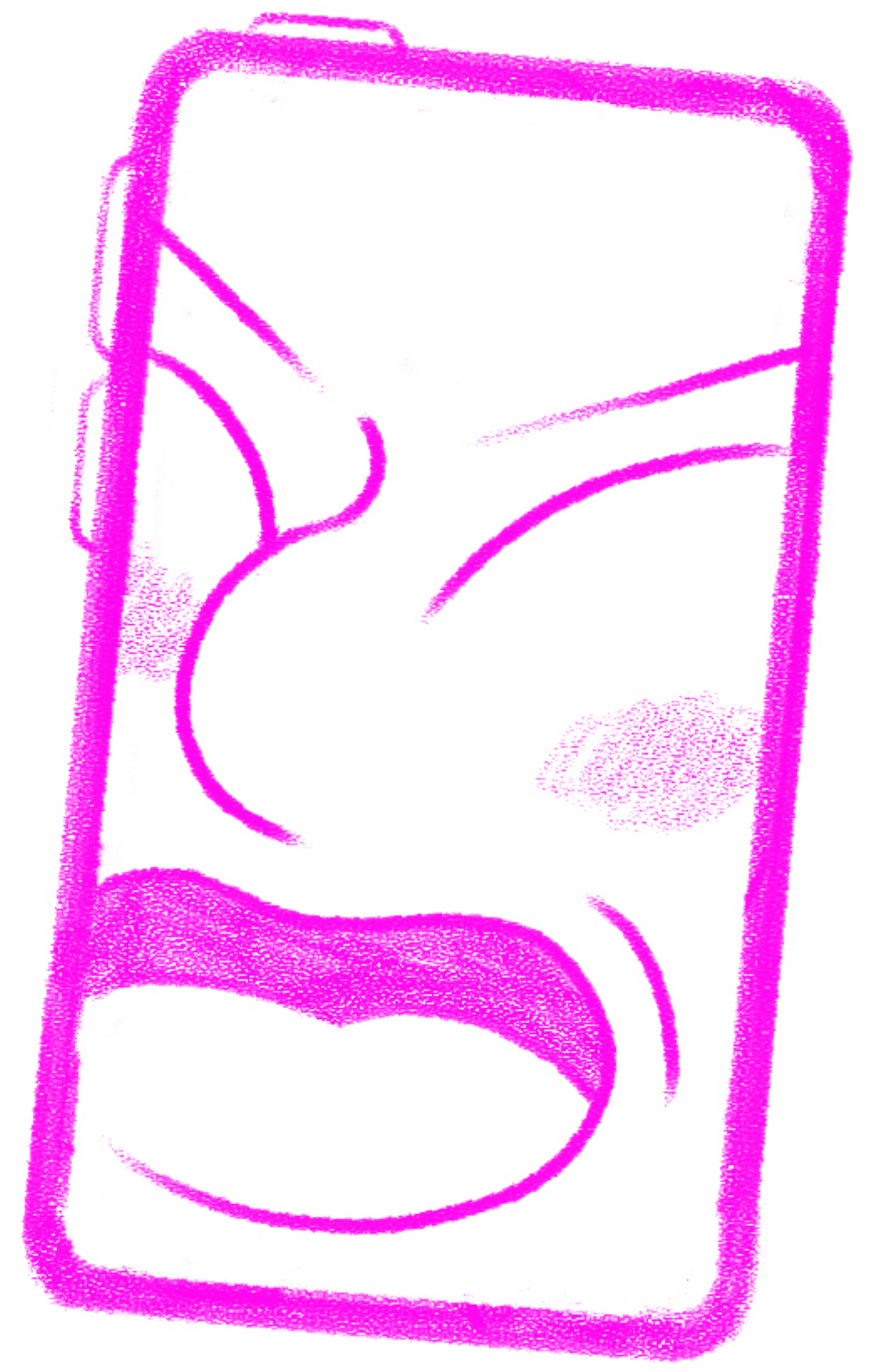
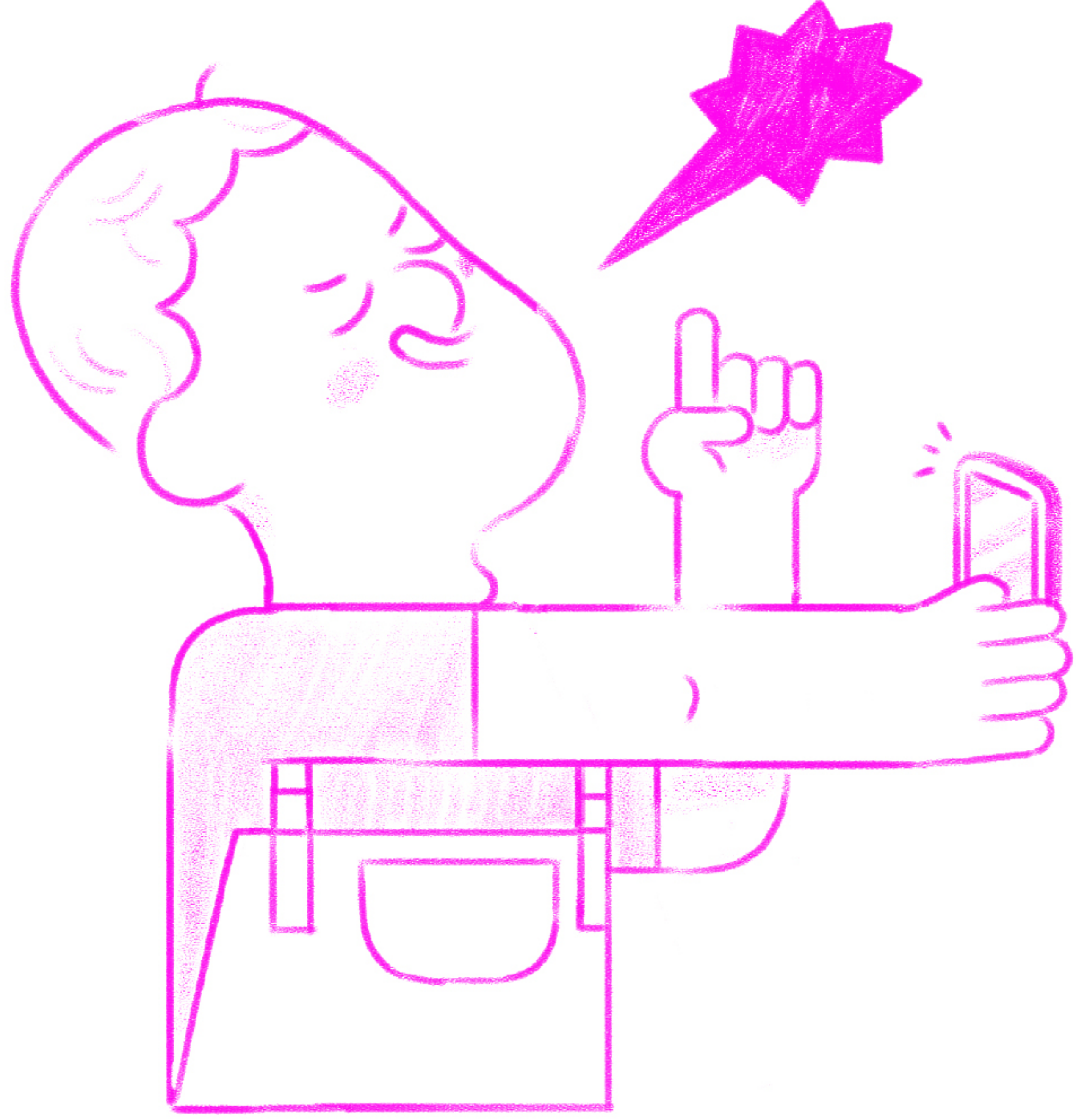
Go back to **Instruments** and press **REC**.

YOUR TURN NOW TO JUMP TO TRIGGER THE SELFIE!

FIND BACK YOUR SELFIE IN YOUR PHOTO ALBUM. !

THE OPERA SELFIE

HAVE YOU EVER TAKEN A SELFIE WHILE SINGING? THAT IS HOW!



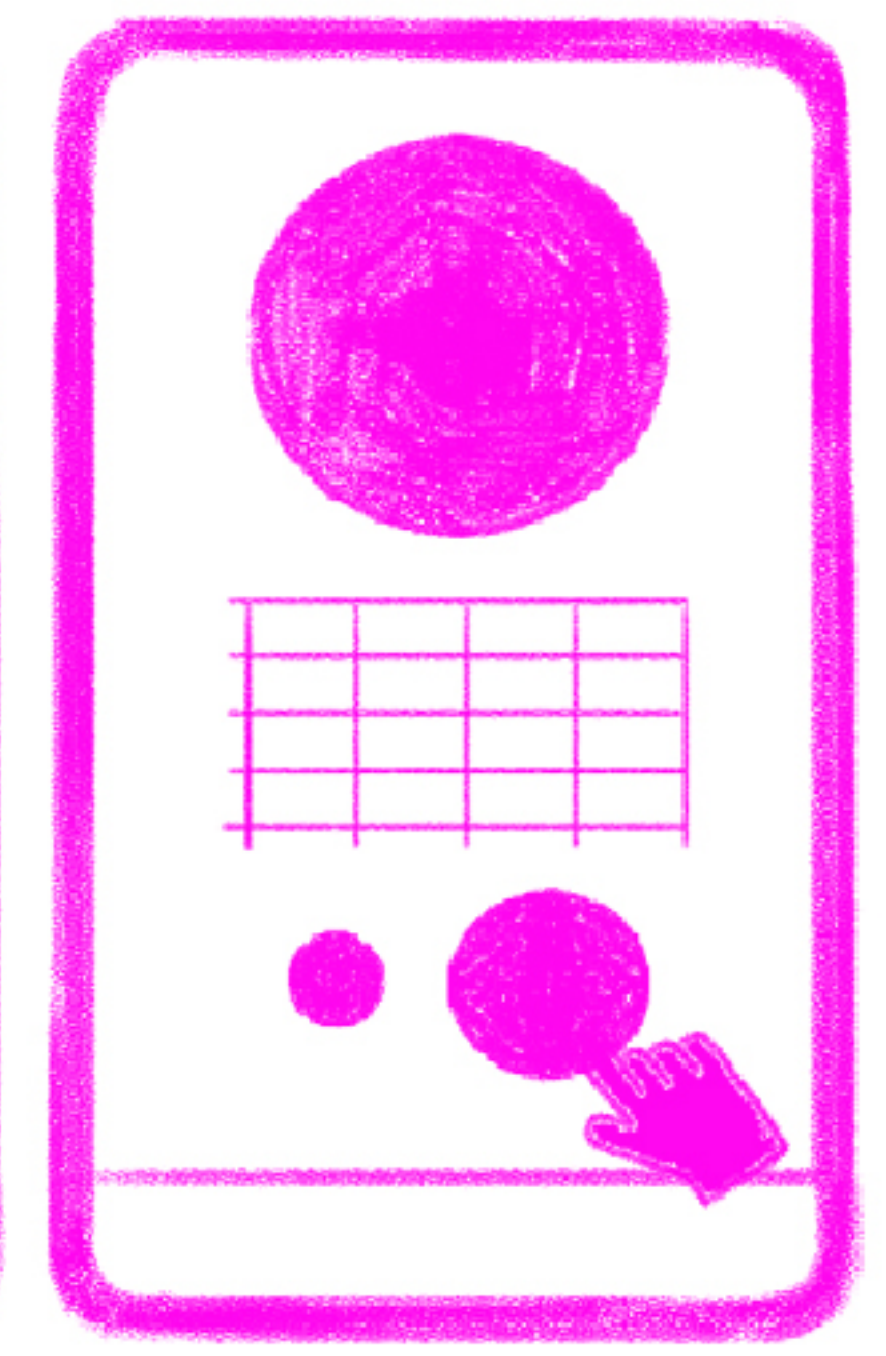
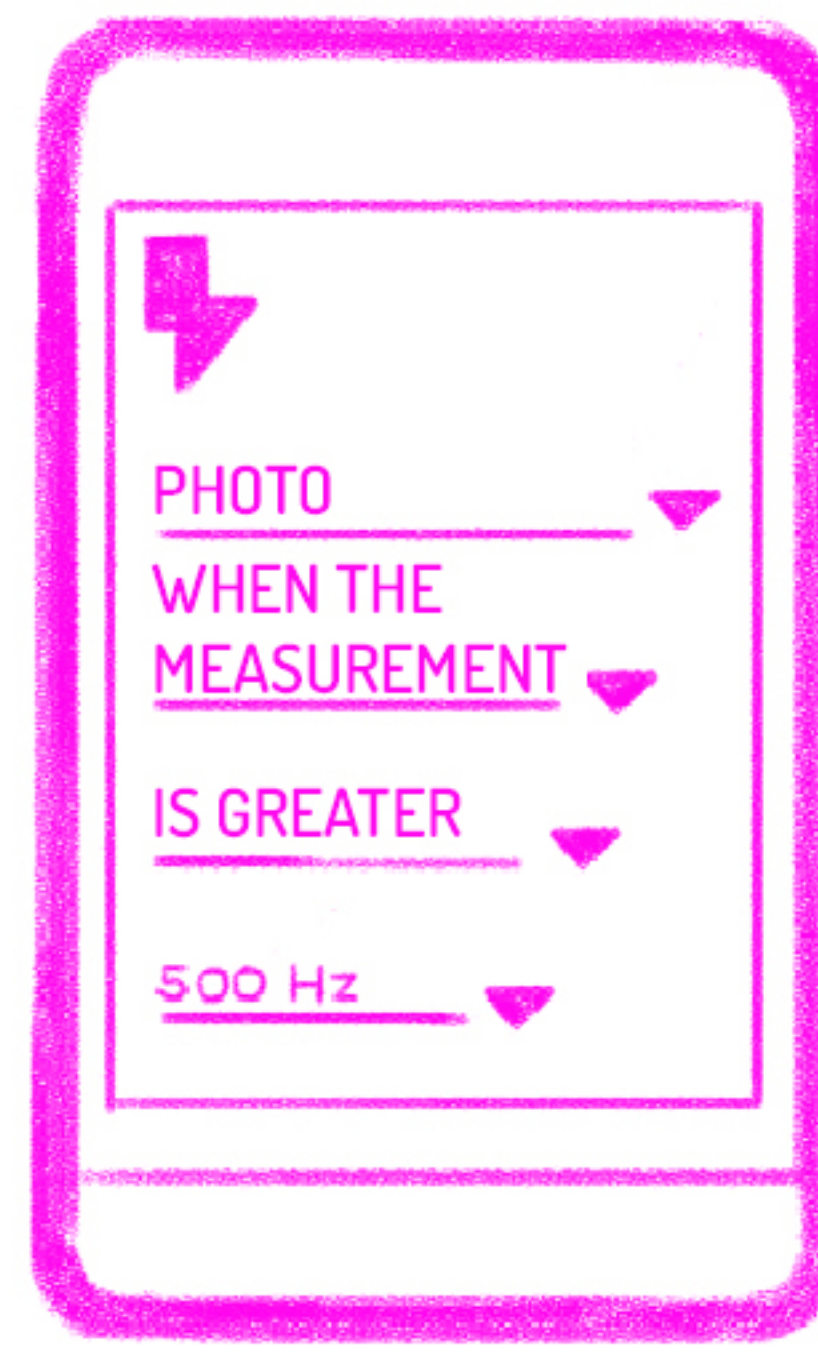
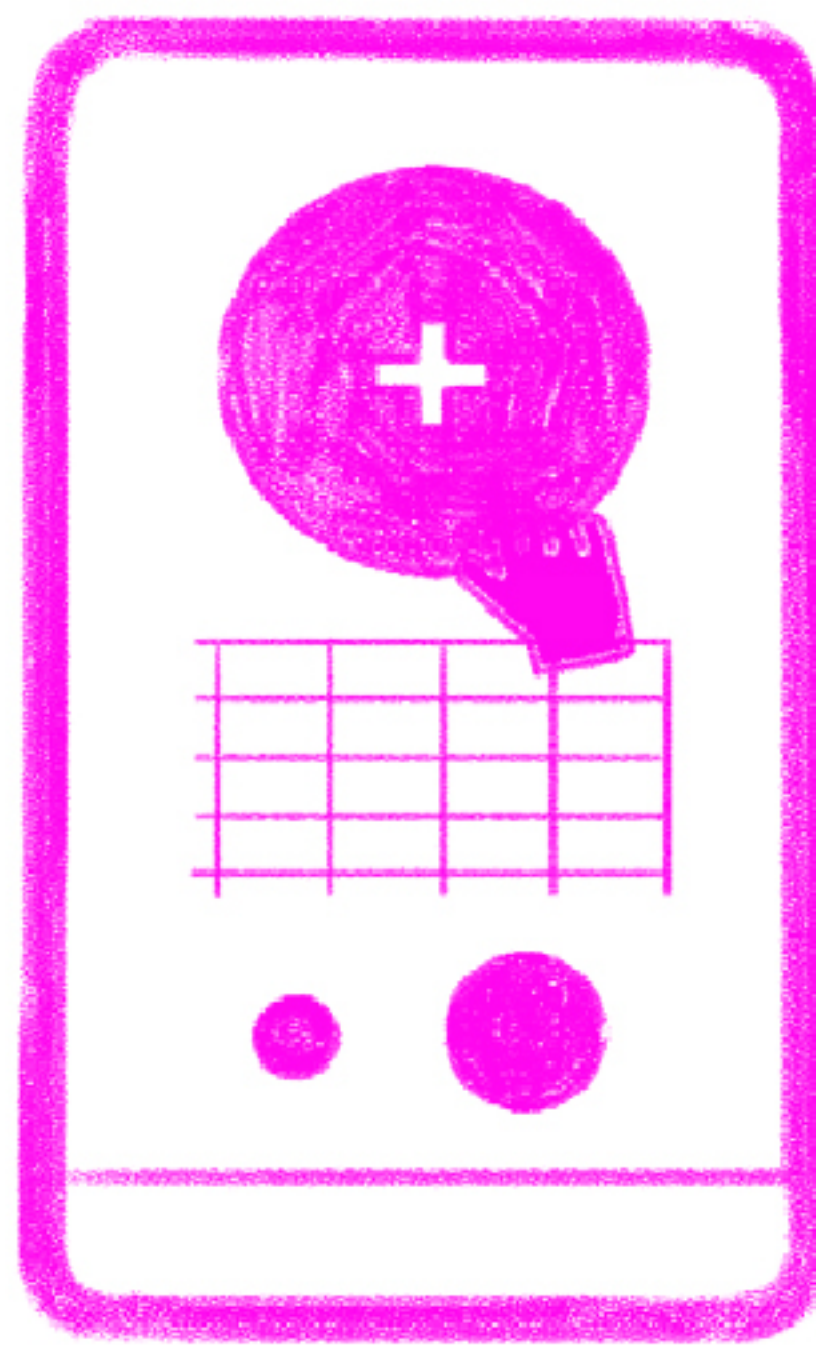
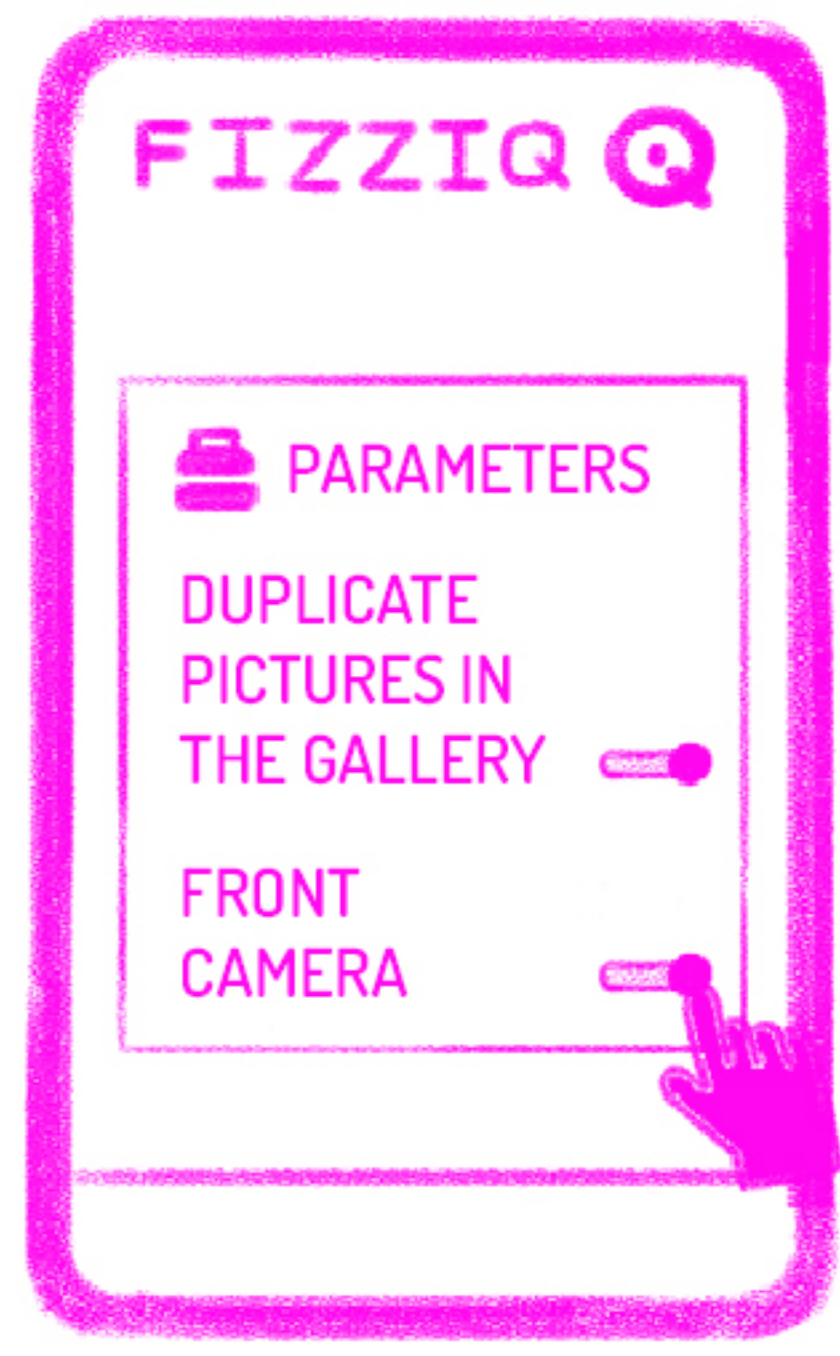
1

2

3

4

5



In **Settings** then **Parameters**, activate these options as hereabove.

In **Instruments** click on the big circle.

Select **Microphone** et choose **Fundamental frequency**.

In **Tools** then in **Triggers**, enter the above values.

Go back to **Instruments** and press **REC.**

YOUR TURN NOW TO MAKE THE HIGHEST NOTE TO TRIGGER THE SELFIE!

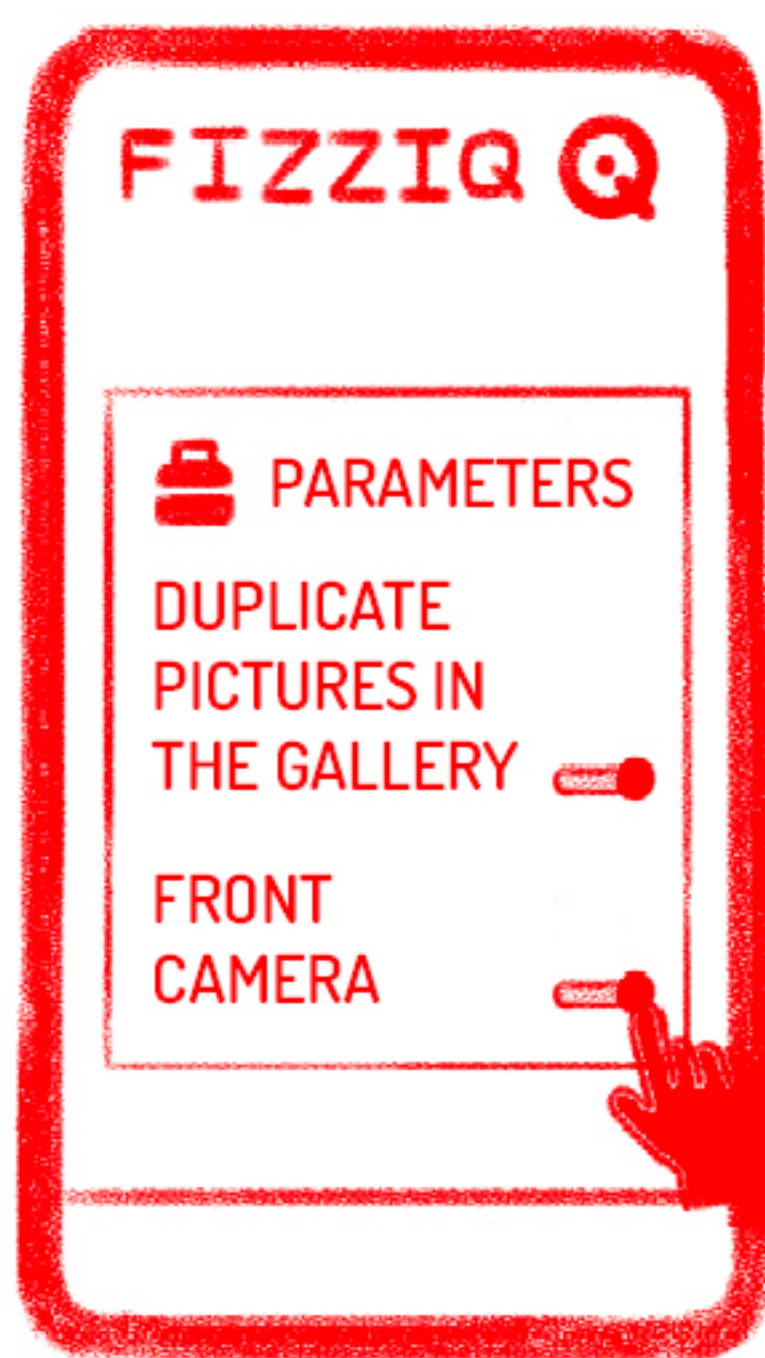
FIND BACK YOUR SELFIE IN YOUR PHOTO ALBUM.

THE SPRINT SELFIE

HAVE YOU EVER TAKEN A SELFIE WHILE RUNNING? THAT IS HOW!

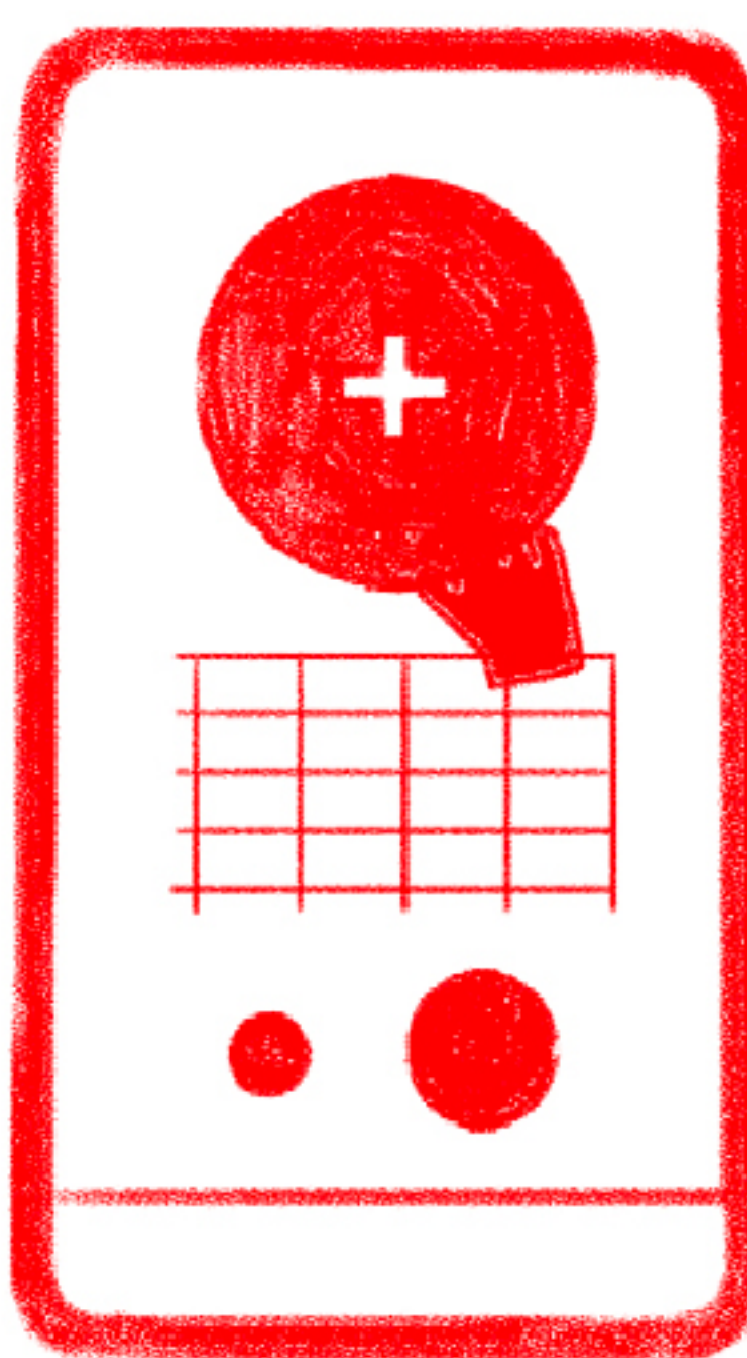


1



In **Settings** then **Parameters**, activate these options as hereabove.

2



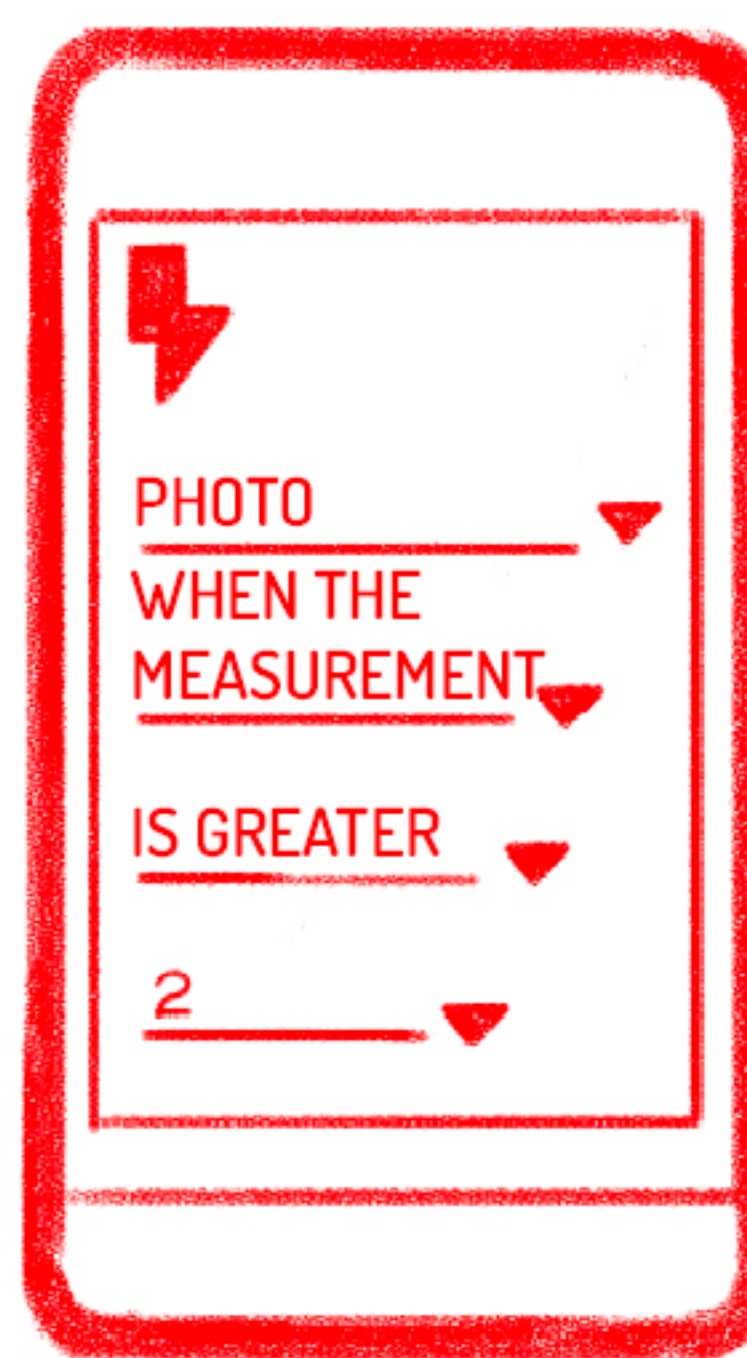
In **Instruments** click on the big circle.

3



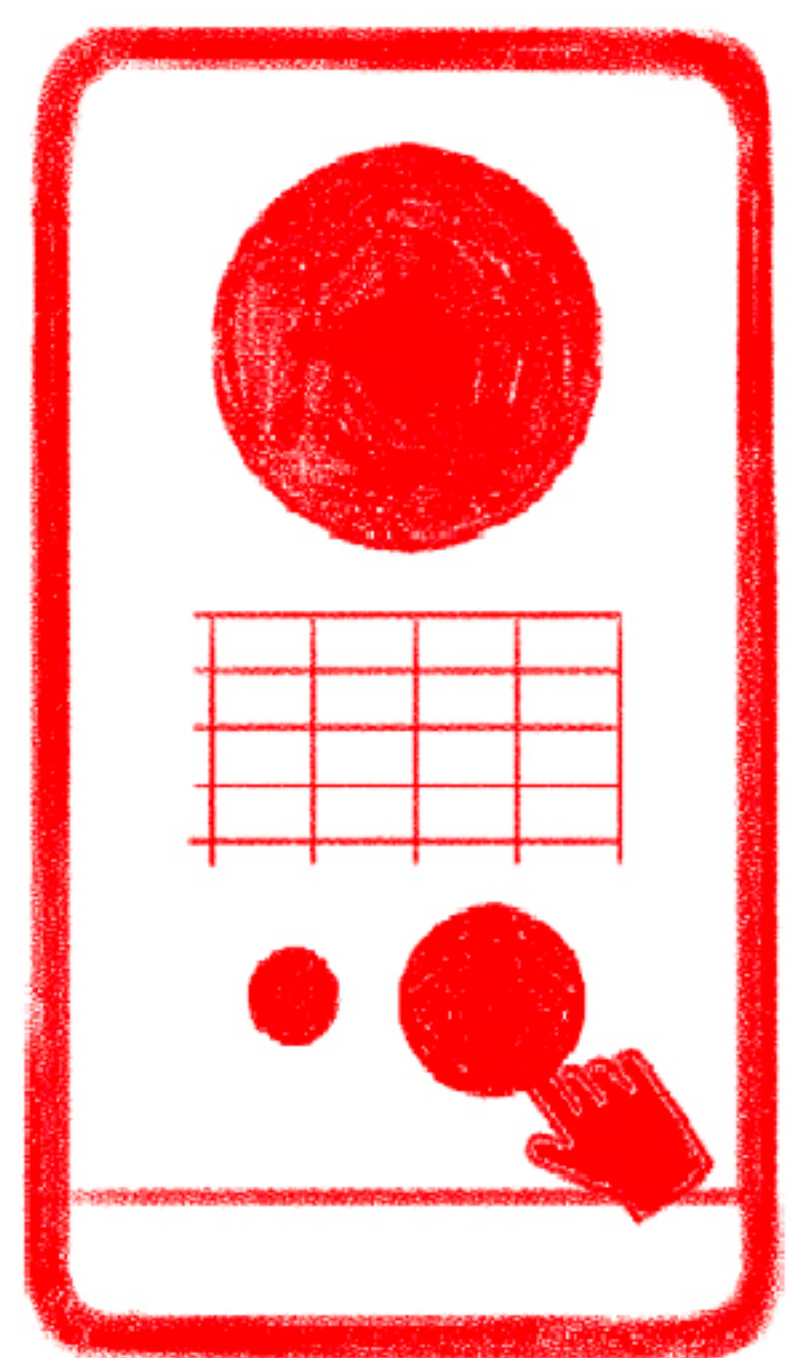
Select **Global Positioning System** et choose **Speed**.

4



In **Tools** then in **Triggers**, enter the above values.

5



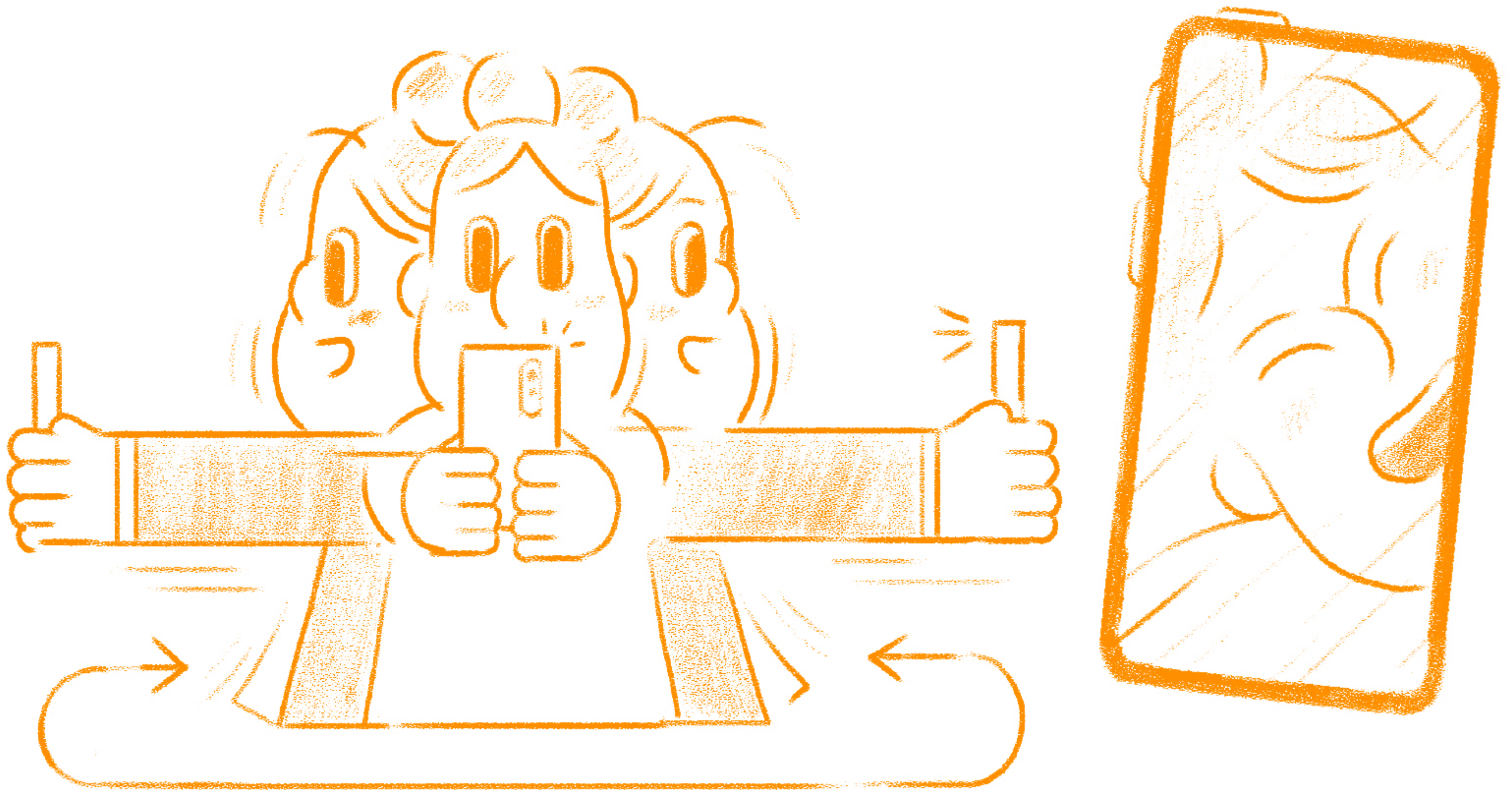
Go back to **Instruments** and press **REC**.

YOUR TURN NOW TO RUN THE FASTEST YOU CAN TO TRIGGER THE SELFIE!

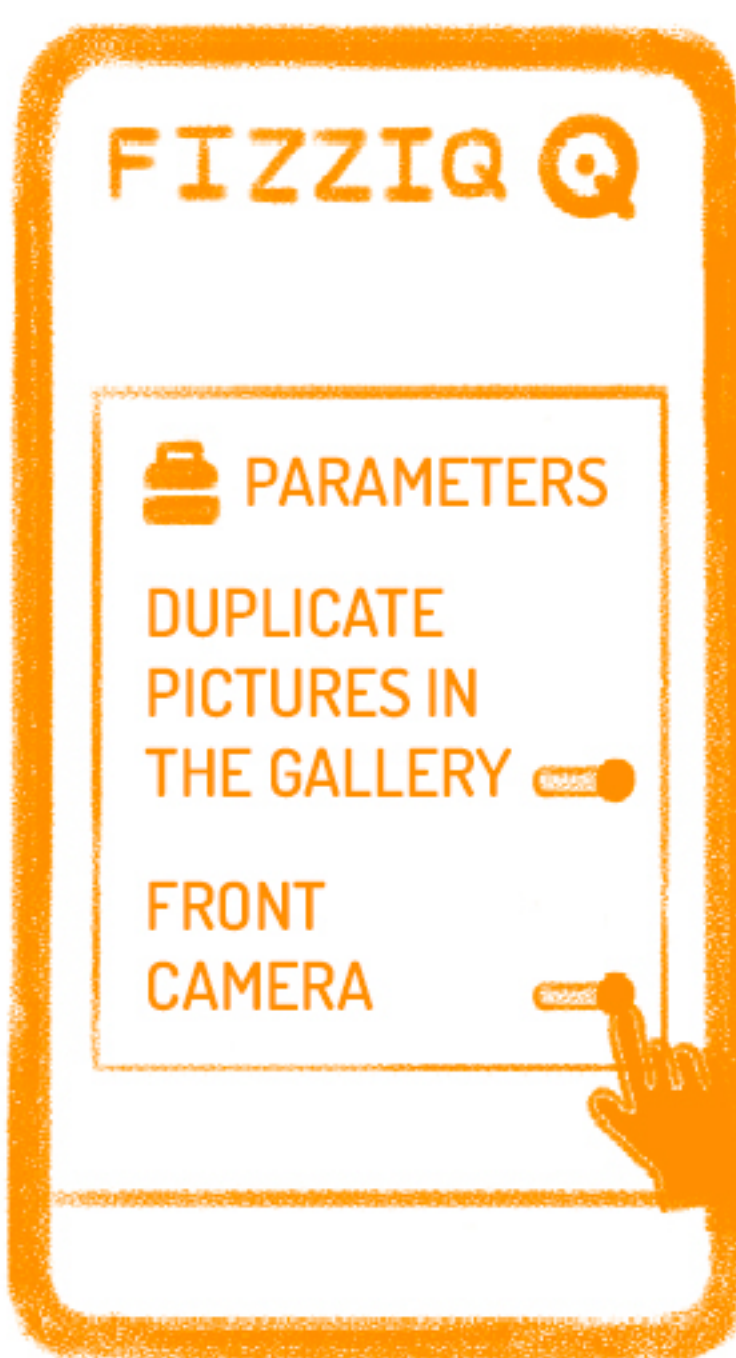
FIND BACK YOUR SELFIE IN YOUR PHOTO ALBUM.

THE SPINNING SELFIE

HAVE YOU EVER TAKEN A SELFIE WHILE SPINNING? THAT IS HOW!

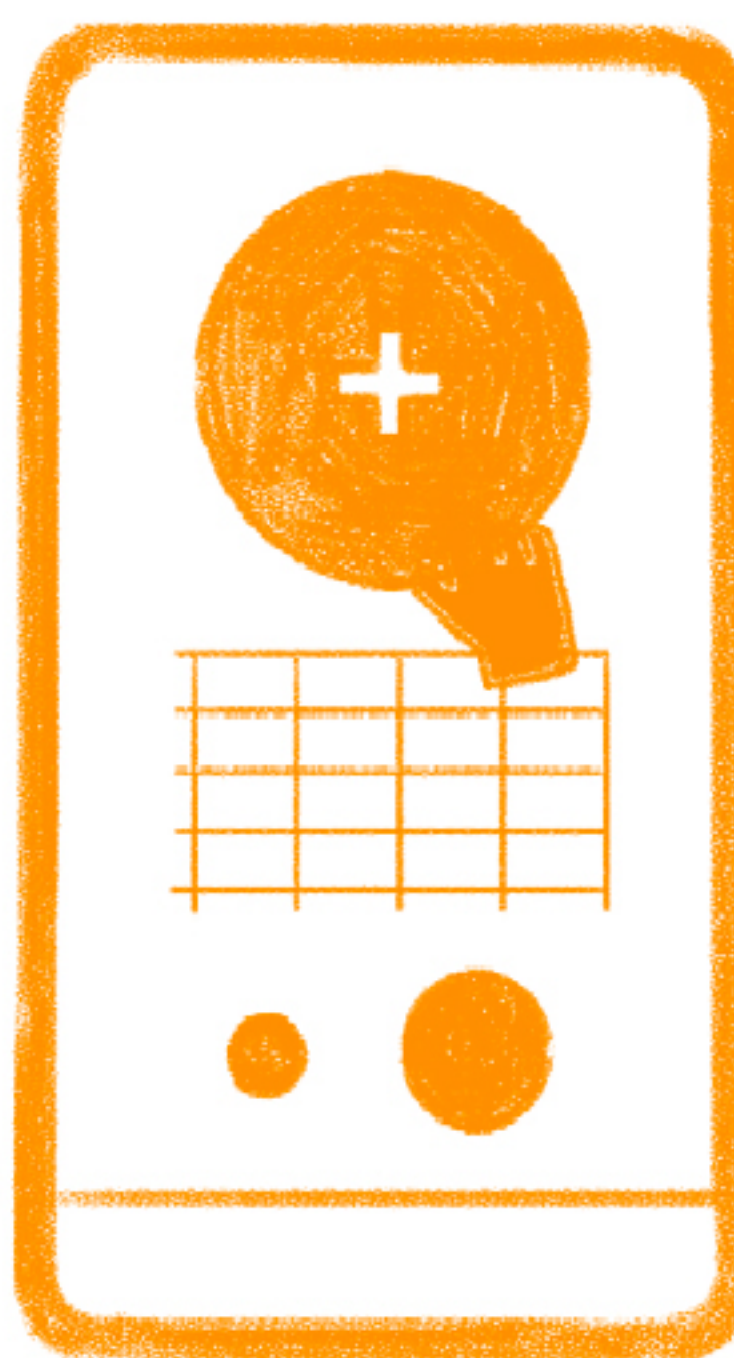


1



In **Settings** then **Parameters**, activate these options as hereabove.

2



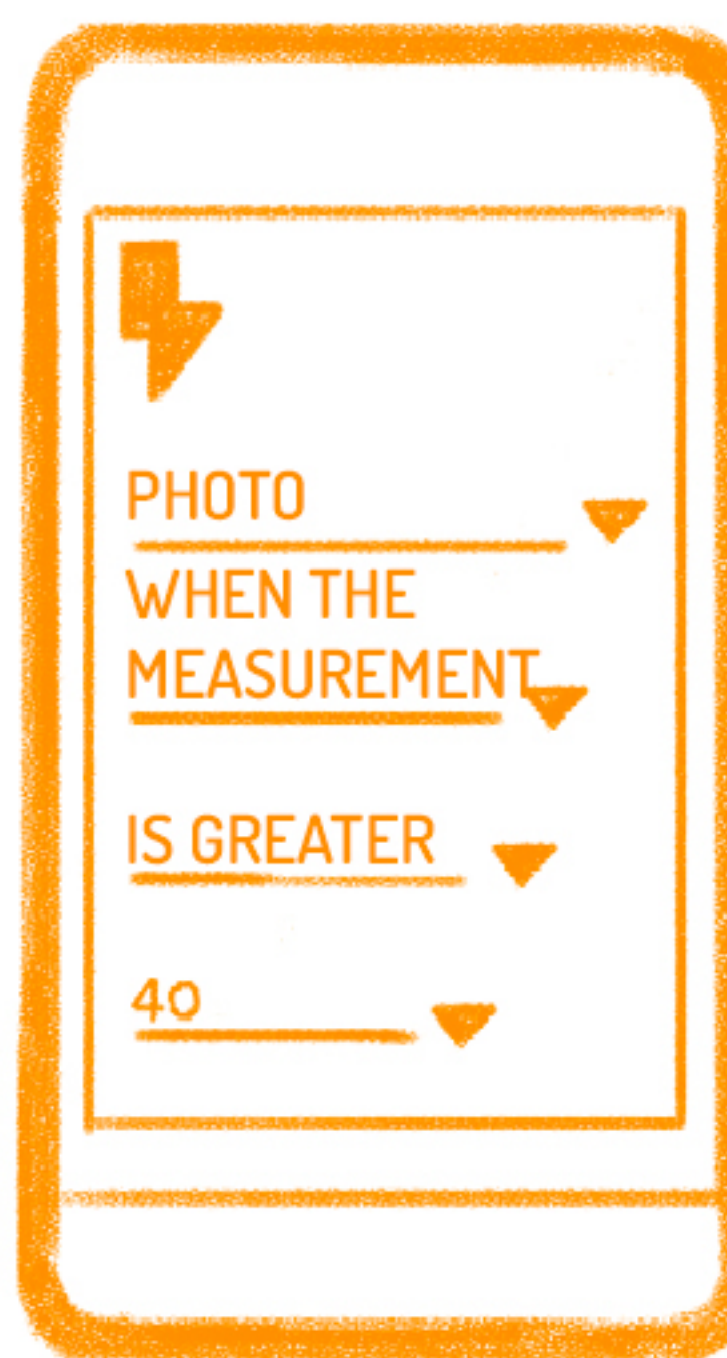
In **Instruments** click on the big circle.

3



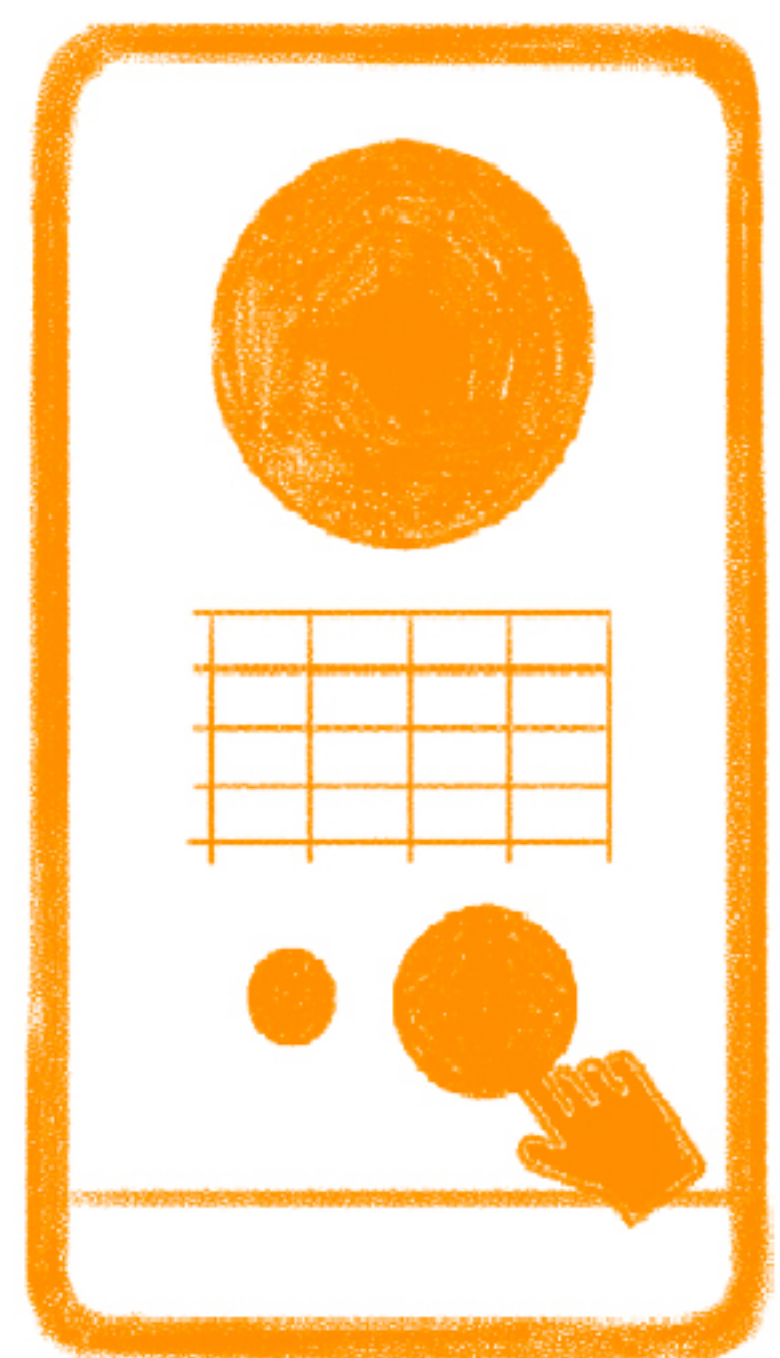
Select **Gyroscope** et choose **Rotation Y**.

4



In **Tools** then in **Triggers**, enter the above values.

5



Go back to **Instruments** and press **REC**.

YOUR TURN NOW TO SPIN THE FASTEST YOU CAN TO TRIGGER THE SELFIE!

FIND BACK YOUR SELFIE IN YOUR PHOTO ALBUM.

THE SELFIE TO INVENT

YOUR TURN: INVENT A SELFIE USING THE SENSOR OF YOUR CHOICE!



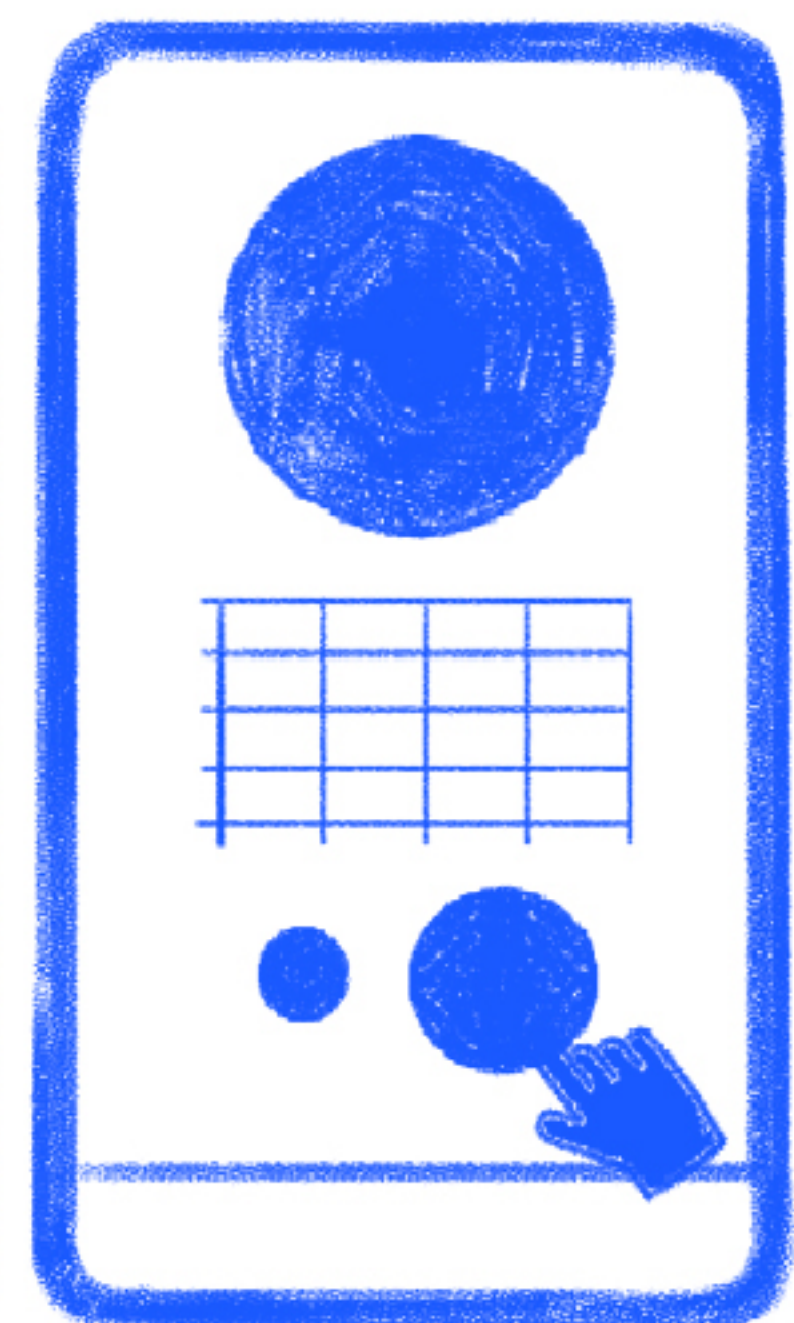
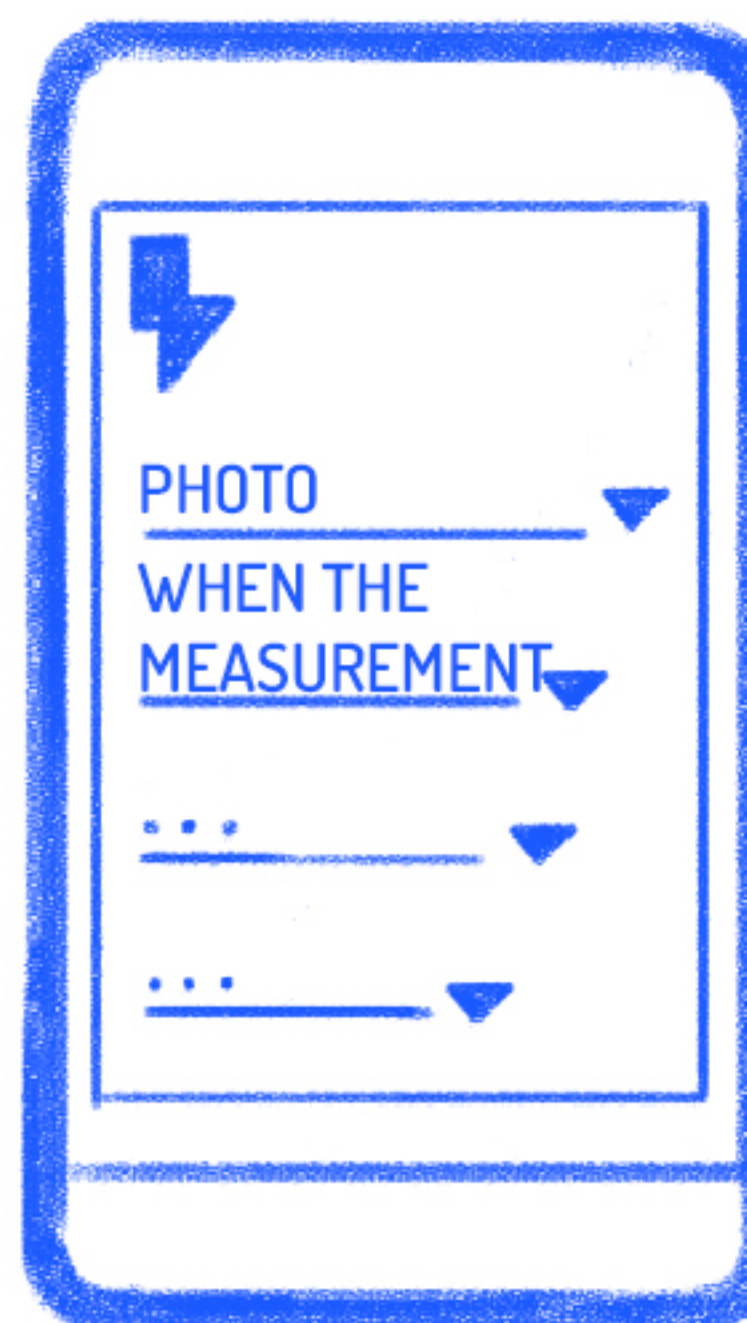
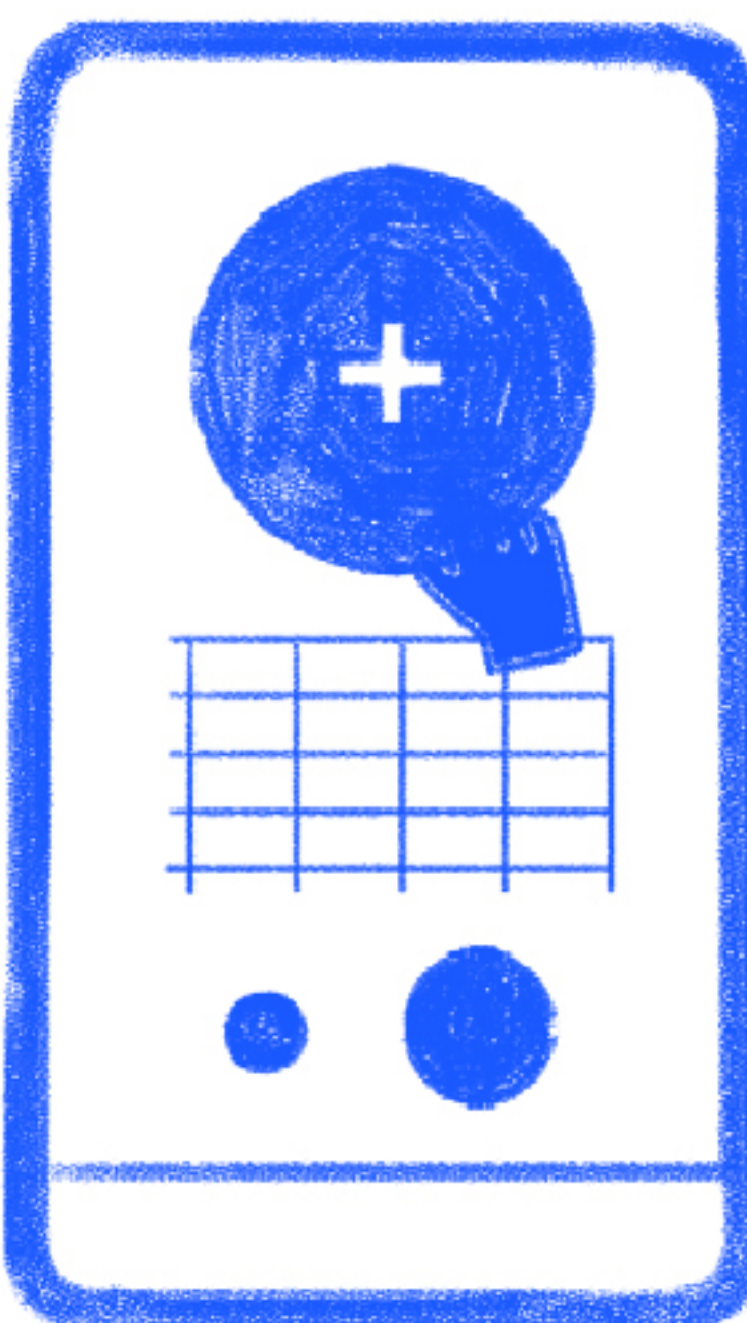
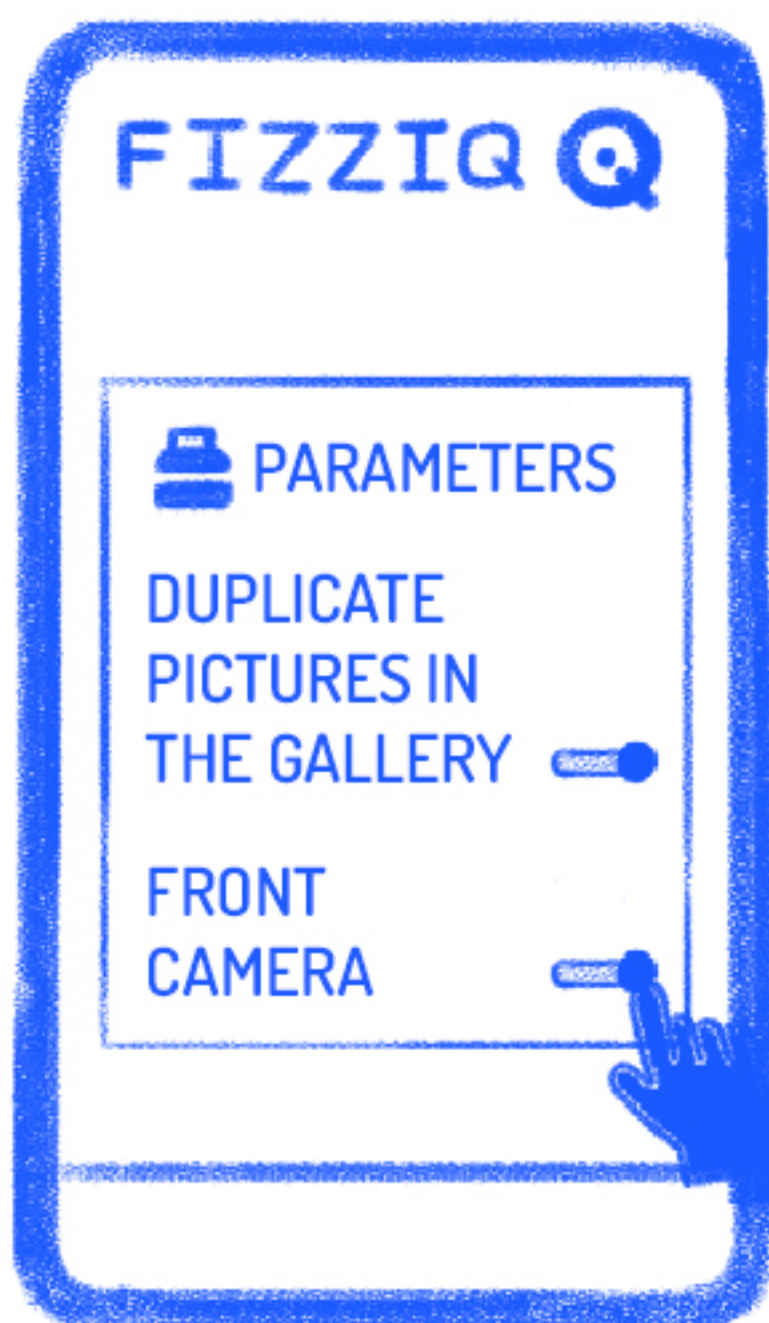
1

2

3

4

5



In **Settings** then **Parameters**, activate these options as hereabove.

In **Instruments** click on the big circle.

Select the sensor you prefer!

In **Tools** then in **Triggers**, enter the values you want.

Go back to **Instruments** and press **REC.**

YOUR TURN NOW TO TAKE THE MOST CREATIVE AND FUNNY SELFIE!

FIND BACK YOUR SELFIE IN YOUR PHOTO ALBUM.